

AUTOMATION TECHNOLOGY ENGINEERING INDUSTRIAL TRADE INDUSTRIAL SERVICE TECHNICS

ASSEMBLY AND OPERATING INSTRUCTIONS FOR

Transport console for switch cabinets

Type 1 836mm Payload 720 kg



Document ID.: SOP-00538-DE

Published 08.09.2020

Version: 4.0



CONTENTS

1. Summary of weights and dimensions

2. General information

- 2.1 Proper use
- 2.2 Delivery contents
- 2.3 Transport conditions
- 2.4 Care and maintenance

3. Safety information/potential hazards

4. Spare parts

Manufactured by

Blumenbecker Automatisierungstechnik GmbH
Sudhoferweg 99 – 107
59269 Beckum

technical questions

Achim Engelmann
Industrial Engineering
T: +49 2521 8406-775
aengelmann@blumenbecker.com

sales questions

Werner Aufenvenne
electrical retailer
T: +49 2521 8406-264
wauenvenne@blumenbecker.com

1. Summary of weights and dimensions

Length	836 mm
Height	125 mm
Width	220 mm
Weight	16,8 kg
Payload	720 kg

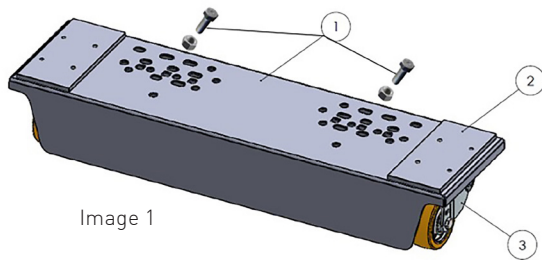
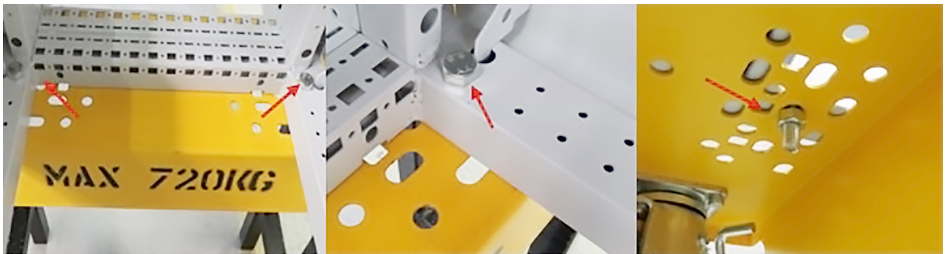


Image 1

Image 2



Picture A

Picture B

Picture C

2. General information

2.1 Proper use

- | The transport console is designed for moving switch cabinets around the shop floor during the production process.
- | At least two consoles must be used for each switch cabinet.
- | The maximum depth of the switch cabinet is 600 mm and the maximum permitted height is 3 m.
- | The maximum load capacity per transport console is 720 kg.
- | The centre of gravity of the switch cabinet must be ≤ 1 m from the console; heavy components are to be fixed to the base of the cabinet.
- | Prior to use a visual check is to be made of the console (for signs of cracks, deformation or damage) in order to ensure that it is in a serviceable condition.
- | The switch cabinet must be lifted safely and securely (by crane, forklift, pallet truck or other device) so that the consoles can be fitted beneath.
- | The transport console must be firmly attached to the switch cabinet being moved.
- | Connecting bolts (M 10) are to be inserted through the fixing holes in the base of the cabinet to engage with the multi-hole system of the transport console (see Image 2, A to C). They are then to be fitted with a large-diameter washer and nut and tight-ened accordingly.
- | The base of the switch cabinet must not be set on or fixed to the safety plates (see Image 1, Picture 2).
- | For transport lengths of > 2 m several consoles are to be arranged beneath the frame according to the type and weight of the cabinet.
- | The transfer must always be carried out by at least two trained members of staff.
- | When in its final position, and standing vertical, the switch cabinet must be immedi-ately immobi-lised using the locking tabs on the swivel castors (Image 1, Picture 3).

2.2 Delivery contents

- | A minimum of two transport consoles (type 1, 836 mm), fully assembled.
 - | One set of operating instructions.
-

2.3 Transport conditions

- | Transfers should only be carried out on a firm, level surface.
- | The travelling route must be free of dirt and deposits.
- | Obstacles of > 2.5 mm must be cleared out of the way.
- | The locking tabs on the castors (see Image 1, Picture 3) must be released prior to transport.
- | The transport unit is to be moved by at least two trained members of staff.
- | Personnel standing within the transport route are to be reminded to remain at a safe distance.
- | The cabinet must only be moved in its longitudinal axis.
- | The cabinet unit can be oriented at will in the X and Y axis for final positioning.
- | When finally in position the transport unit must be secured in place using the lock-ing tabs on the swivel castors (see Image, Picture 3).

2.4 Care and maintenance

- | Perform regular checks to ensure that the castors (see Image 1, Picture 3) have smooth running surfaces.
- | Check that the castors are rotating freely.
- | The locking tabs must be examined regularly to ensure that they function properly.

3. Safety information

- | Each console should only be carried by its long sides and with gloved hands.
- | All cabinet doors or loose fixtures must be closed, secured or removed prior to transport.
- | Persons are strictly prohibited from riding on the moving consoles.
- | The transport unit must never be pulled or pushed using forklifts or motorised material-handling equipment.
- | Safety footwear must be worn at all times when handling and transporting the load.

3. Potential hazards:

- | Risk of fingers or hands becoming trapped if the console is carried by its end face.
- | Risk of parts of the body becoming crushed or trapped.
- | Risk of bruising or impact to the feet.
- | Danger of the cabinet tipping over.
- | Risk of stumbling when walking backwards.

4. Spare parts

- | Steel plate for swivel castors type N. LH-GTH 100K-1-ST
- | Galvanised hexagon head bolts type M8 x 18-8.8
- | Flat washer type DIN 125 A 8.4

ZERTIFIKAT CERTIFICATE



Zertifikatsinhaber:
Licensee:

Blumenbecker Automatisierungstechnik GmbH
Sudhoferweg 99-107
59269 Beckum
Germany

Produkt:
Product:
Handelsname(n):
Trade name(s):
Typ(en)/Modell(e):
Type(s)/model(s):
Produktkenndaten:
Product specifications:

Transportkonsole
transport console
BLUMENBECKER
Typ 1 – 836 mm

Abmessungen / dimensions: Länge / length 836 mm, Breite / width 220 mm,
Höhe / height 125 mm (140 mm incl. Rollen / casters)
Werkstoff / raw material: Stahlblech / steel sheet, 3 mm
Tragkraft / load capacity: 720 kg
Eigengewicht / net weight: 16,8 kg
Rollen / casters: Ø100x40 mm, Feststeller / caster locks,
Tragfähigkeit / load carrying capacity 400 kg

DEKRA Testing and Certification GmbH erklärt hiermit, dass das oben genannte Produkt den unten genannten Anforderungen entspricht. Das Produkt darf mit dem abgebildeten Prüfzeichen gekennzeichnet werden. Eine Veränderung der Darstellung des Prüfzeichens ist nicht zulässig. Die Verwendung des Prüfzeichens ist ausschließlich für das genannte Produkt bis zum angegebenen Zeitpunkt erlaubt.

DEKRA Testing and Certification GmbH hereby declares that the above-mentioned product is in conformity with the below mentioned requirements. The Product may be labelled with the shown certification mark. Any modification of the layout of the certification mark is prohibited. The Use of the certification mark is only allowed for the mentioned product until the stated date of expiry.

Prüfgrundlage: EK5/AK5 14-04.0:2014

Test requirements:

Fertigungsstätte(n): Jordan GmbH Metec Blechsysteme, Gewerbegebiet Süd 4, 39443 Staßfurt / OT
Factory location(s): Förderstedt, Germany

Einzelheiten, wie Prüfergebnisse und Komponenten, sind in folgenden Dokumenten niedergelegt:

Details like test results or components are laid down in following documents:

- Zertifikationsakten-Nr(n): 5018022.18001, 5018022.20001
Certification file no(s):
- Prüfbericht(e): 341948700
Test report(s):
- Hersteller-Zertifizierungsvertrag: 5518022
Manufacturer's certification contract:

Das Prüfzeichen darf nur auf den in diesen Dokumenten beschriebenen Produkten angebracht werden. Nur die der Zertifizierungsstelle gemeldeten Bauteile sind zugelassen. Die Verwendung von Alternativen bedarf der vorherigen Zustimmung der Zertifizierungsstelle.

The certification mark may be applied only to products as described in these documents. Only those components are allowed that have been accepted by the certification body. The use of alternatives requires the prior approval of the certification body.

Dieses Zertifikat ersetzt das Zertifikat: 5018022.18001

This certificate supersedes certificate:

Das Zertifikat wurde ausgegeben am: 8. September 2020

This certificate was issued on:

Es wird spätestens ungültig am: 8. September 2025

It expires at the latest on:

Zertifikats-Nr.: 5018022.20001

Certificate no.:

DEKRA Testing and Certification GmbH

Jörg-Timm Kilsch
Geschäftsführer
Managing Director

© Integral publication of this certificate is allowed.

Prüfzeichen:
Certification mark:



oder/

Seite 1 von 1
page 1 of 1

WIR FREUEN UNS AUF
IHRE FRAGEN.