



BLUMENBECKER

WE DELIVER SOLUTIONS

AUTOMATION TECHNOLOGY ENGINEERING INDUSTRIAL TRADE **INDUSTRIAL SERVICE** TECHNICS

REFERENCE

Industrial maintenance

Servicing of explosion-proof drives



CLIENT:



BRÖKELMANN+Co -
Oelmühle GmbH + Co
Hafenstraße 83
59067 Hamm

PROJECT COMPLETED BY:

Blumenbecker Industrie-Service GmbH
Sudhoferweg 99-107
59269 Beckum
T: +49 2521 8406-0
F: +49 2521 8406-149
bis.beckum@blumenbecker.com

COMMISSION:

To overhaul some 130 drive units (motors, gearboxes, pumps and fans), many of which were installed and operating in an explosive environment

Execution: 2017

YOUR PARTNER FOR SERVICING WORK IN **EXPLOSIVE** ENVIRONMENTS

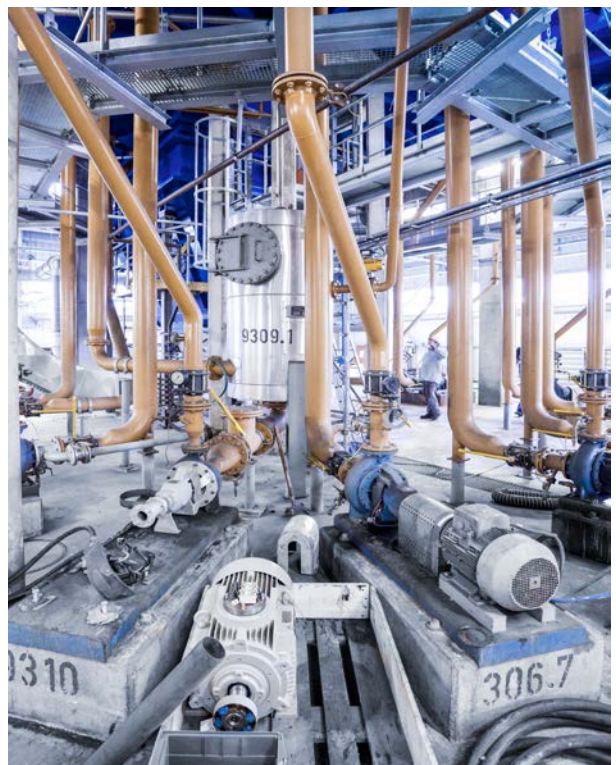
Servicing and repairing motors, gearboxes, pumps and fans, and conducting the subsequent acceptance test, calls for specially trained personnel. Blumenbecker Industrie-Service has the required expertise and is able to deploy staff who are qualified in the field of explosion protection (Qualified persons according to Industrial Safety Rules (BetrSichV), TRBS 1203).

BRÖKELMANN + CO - OELMÜHLE GMBH + CO

As one of Germany's last owner-run oil mills, the Hamm-based Brökelmann company processes around 500,000 tonnes of oilseed a year to produce high-grade cooking oil, feedstuffs, coarse meal and fatty acids, these being marketed under brand names such as BRÖLIO. The silo plant has a holding capacity of more than 70,000 tonnes. By-products include raw oil and the protein-rich feedstuffs rapeseed meal and sunflower meal, which the feedstuffs industry uses to produce quality fodder and feed. The process also yields rape cake and rapeseed lecithin, which is used by the foodstuffs industry in the manufacture of chocolate.

THE COMMISSION

Some 130 drive units, many operating in an explosive environment, were to be overhauled over a period of 14 days.





»Blumenbecker completed all the work to our fullest satisfaction and in the short deadline specified.«

Alexander Steinweg, Head of mechanical maintenance
BRÖKELMANN + Co - Oelmühle GmbH + Co

SERVICES PROVIDED

In the Brökelmann extraction hall hexane is used to extract the oil from the crushed seed. Hexane is a highly explosive gas and for this reason the motors and pumps operating in this area must be of explosion-proof design. Specially trained personnel are needed both for the servicing work and for the subsequent acceptance test. Evidence of the relevant qualifications is therefore a precondition for the award of the contract.

The extraction area was shut down for the duration of the refit. The 14-day timeframe was extremely tight, with only seven days allocated to the work in the explosive environment areas. Moreover, the drives not only needed servicing but also had to be re-calibrated and issued with a test certificate. And there were other last-minute on-site tasks that needed carrying out too. In order to provide for a fast response time Industrie-Service installed a site container at the Brökelmann plant for the project management to be always on hand when needed.

A total of 130 drives (motors, gearboxes, pumps and fans) were overhauled, with nearly 90% of these units operating in explosive areas. All were transported to the Industrie-Service workshops in Beckum where the overhaul and repair work was done. After testing and acceptance by a qualified engineer the units were taken back to Hamm for installation and alignment. The commissioning process was undertaken by Brökelmann's own staff, who were supported by a team from Industrie-Service.



WE LOOK FORWARD TO
HEARING FROM YOU.